



Sky Villas at Estate 128

Inspiring generous living



ESTATE
128



Real well-being begins at home

Located in Sector 128, Noida, Estate 128 is designed with the utmost attention to detail, evident in its contemporary architecture and design philosophy, and is crafted with the well-being of its residents in mind.

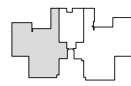
From large expansive decks for a bespoke outdoor experience to amenities created for movement and interaction, the estate curates an experience of holistic wellness across 10 acres.

Estate 128 is generously imbued with our philosophy of biophilia, encompassing agrarian fields and expansive orchards. The estate also offers conveniences such as a pet park, a play area for kids and an amphitheatre, as well as sports amenities such as a lawn tennis court, a cycling track and a separate jogging path.

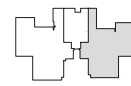
With over 80% open spaces in the midst of the bustling cityscape, Estate 128 invites you to embark on a journey of well-being like no other.

Sky Villa 1

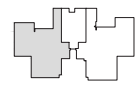
Carpet area: 5789 sq. ft./ 537.81 sq. m.



TOWER 1



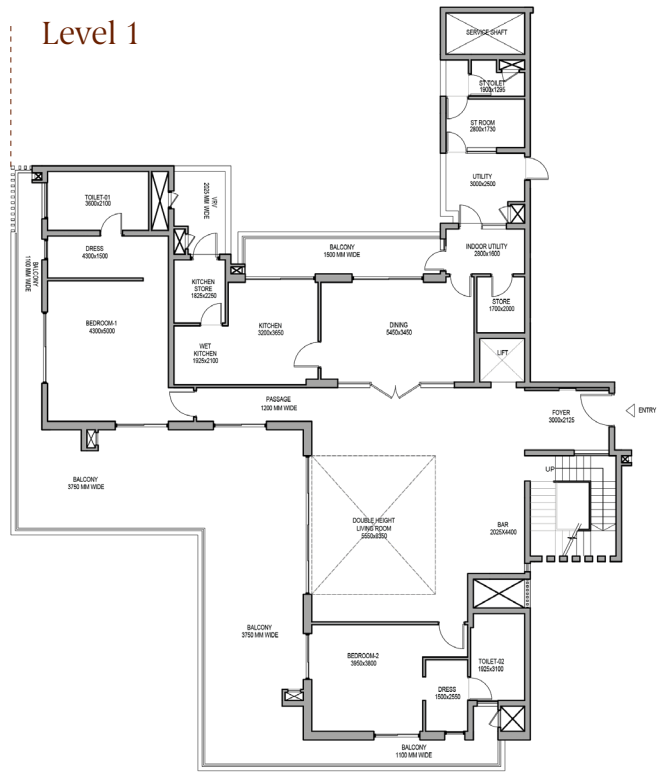
TOWER 2



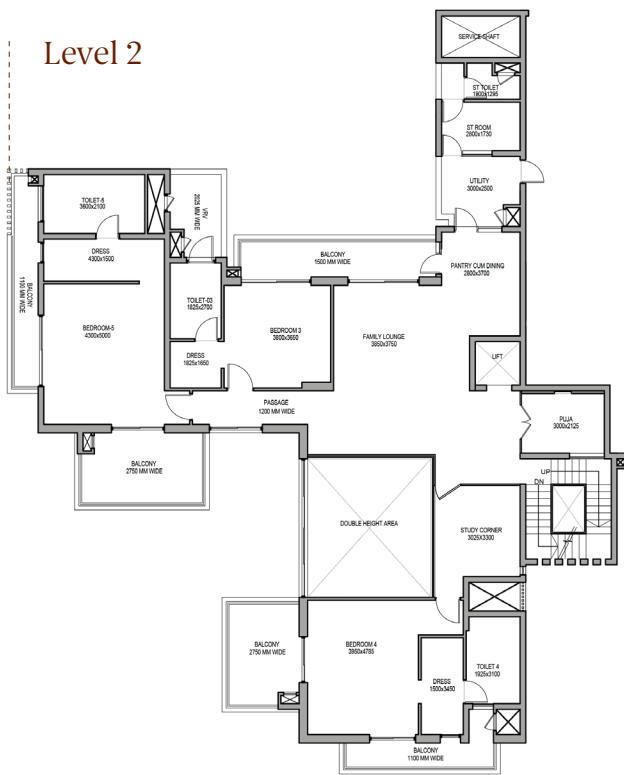
TOWER 3

1. Triplex (3 floors with 5 bedrooms and fully equipped kitchen)
2. Bedrooms and guest room with separate entrance for privacy and comfort
3. Double height living room with a separate lounge area
4. Personalised storage with indoor utility space

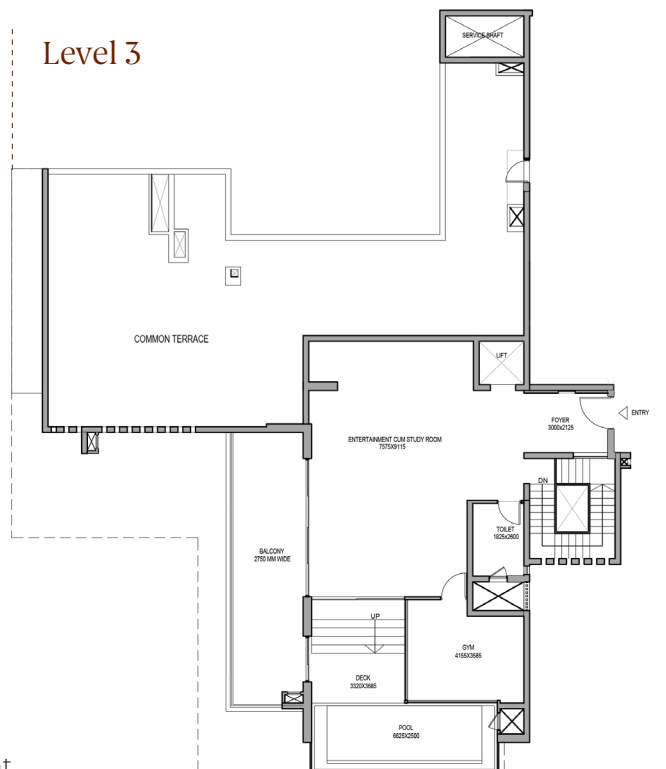
Level 1



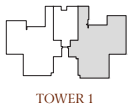
Level 2



Level 3



5. Private bar area
6. Exclusive family and entertainment lounge
7. Dedicated study corner
8. Personalised walk-in closets for each bedroom
9. Wraparound balconies that are 12 to 13 feet wide for better ventilation and sunlight
10. Private swimming pool
11. Exclusive gym area
12. Kitchen with dedicated wet area and dry stores
13. Spacious living and dining area
14. Personal elevators
15. Grand and spacious entrance lobby
16. Provisions for both personal and formal engagement



TOWER 1



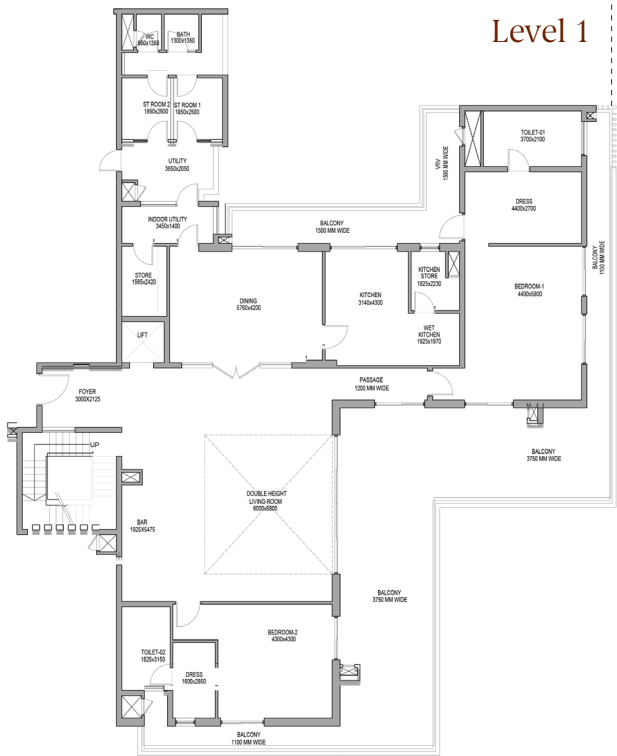
TOWER 2



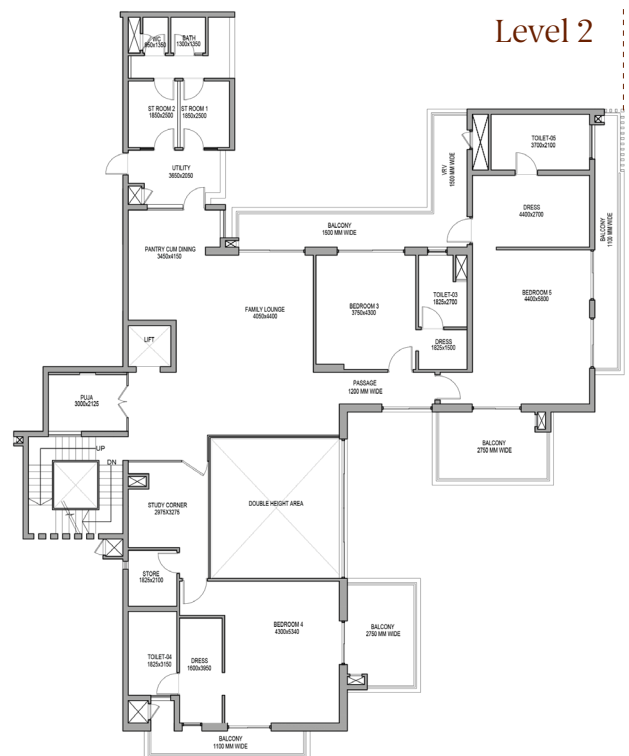
TOWER 3

Sky Villa 2

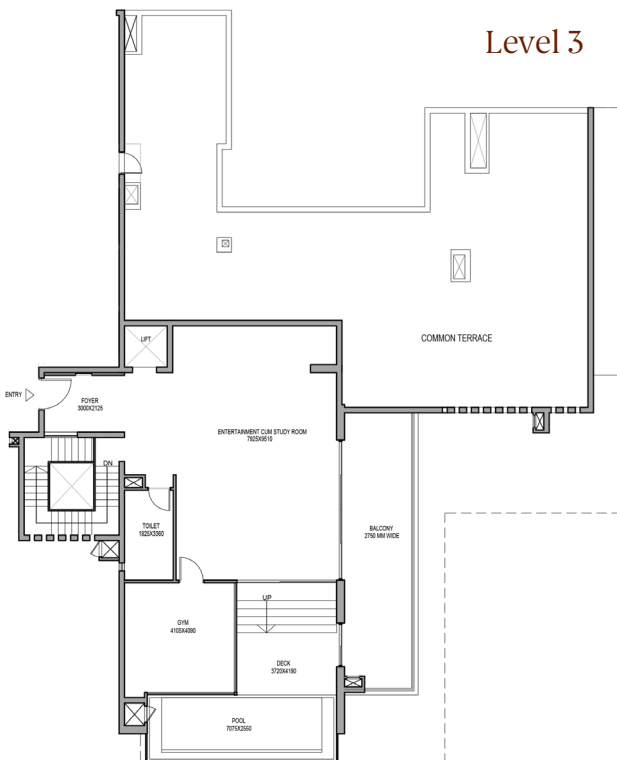
Carpet area: 6827 sq. ft./ 634.24 sq. m.



1. Triplex (3 floors with 5 bedrooms and fully equipped kitchen)
2. Bedrooms and guest room with separate entrance for privacy and comfort
3. Double height living room with a separate lounge area
4. Personalised storage with indoor utility space



5. Private bar area
6. Exclusive family and entertainment lounge
7. Dedicated study corner
8. Personalised walk-in closets for each bedroom
9. Wraparound balconies that are 12 to 13 feet wide for better ventilation and sunlight
10. Private swimming pool
11. Exclusive gym area
12. Kitchen with dedicated wet area and dry stores
13. Spacious living and dining area
14. Personal elevators
15. Grand and spacious entrance lobby
16. Provisions for both personal and formal engagement



Living room

Generously designed double height living room, offering expansive views of the estate.



LEVEL 1

Sky Villas

The Estate 128 Sky Villas are designed to embody our value of generosity. Our triplex penthouse residences come equipped with best-in-class modern amenities, including a dedicated gym area, a study, spacious closets, a private pool and bar area, and more. Large wraparound decks offer stunning views of the estate, while separate entrances for bedrooms and guest rooms ensure added privacy. With an indoor-cum-outdoor living room and a separate lounge area, the Sky Villas are thoughtfully planned to offer the perfect blend of personal and formal space.



Dining room

Spacious dining room, for you to host your loved ones at gatherings, intimate and elaborate alike.



Family lounge

Cosy yet spacious entertainment lounge, for you to unwind or enjoy family time.



LEVEL 3

Entertainment room

Airy living room, designed to offer comfort, that opens up to your own private pool.

LiveWell at Estate 128

At Max Estates, your well-being is at the core of our ideology.

We call this the LiveWell & WorkWell philosophy — a vision to positively enhance every life we touch. Estate 128 has been designed with meticulous attention paid to every element, to create a unique confluence of spaces that enable holistic well-being across physical, social, emotional and environmental aspects of wellness.



Physical Well-being

Designed to promote movement, with minimal surface vehicular circulation and an abundance of sports amenities, to enrich your quality of life.



Emotional Well-being

Encompassing 7 acres of open greens, to allow you to rejuvenate in nature, and find solace even amid the bustling cityscape.



Environmental Well-being

Designed with eco-conscious practices at every step, from sourcing to execution, for your long-term well-being.



Social Well-being

Designed for engagement and interaction, with amenities like all day dining and open cabanas, to bring you a sense of belonging within a community.



Max Estates Ltd. (CIN No. U70200PB2016PLC040200) is having its Corporate office at Max Towers, L-15, C-001/A/1, Sector-16B, Noida, Gautam Buddha Nagar, Noida UP-201301 & Registered office at 419, Bhal Mohan Singh Nagar Village Railmajra, Tehsil Balachaur, Nawanshehar, Punjab 144533. Max Estates Ltd. is the promoter of Max Estates 128 Pvt. Ltd. (CIN No. U55101DL2006PTC151422) Regd. Office: Max House, 1, Dr. Jha Marg, Okhla, New Delhi 110020. This document contains proprietary and confidential information that is not in the public domain. This document and its contents are intended for the exclusive use of Max Estates 128 Pvt. Ltd., its associate companies and any intended recipients with whom same is shared. This document/ information may not be published, circulated, reproduced and otherwise distributed to any third party without the express written consent of Max Estates 128 Pvt. Ltd. The Project 'Estate 128' is registered with the UPREPA with registration no. UPRERAPM2446459. Please refer to project details on the website of UPREPA www.up-repa.in prior to making any decision. The promoter of Estate 128 is Max Estates 128 Pvt. Ltd. (CIN No. U55101DL2006PTC151422) having its Corporate office at Max Towers L-15 C-001/A/1, Sector-16B, Noida, Gautam Buddha Nagar, Noida UP-201301 & Registered office at Max House, 1, Dr. Jha Marg, Okhla, New Delhi 110020. Promoter Registration No. - UPRERAPM235248, collection A/c of the Project: *Max Estates 128 Private Limited Collection A/c for Estate 128*, IICI Bank Ltd. having IFSC Code IICI00000031, Account No. 003105042349

Disclaimer: This is not an offer, an invitation to offer and/or commitment of any nature. The images include artistic impressions and stock images. The details of Project, Apartment/ Unit including but not limited to designs, dimensions, cost, facilities, plans, images, specifications, furniture, accessories, paintings, items, electronic goods, additional fittings/fixtures, decorative items, false ceiling including finishing materials, specifications, shades, sizes and colour of the tiles and other details shown in the images are only indicative in nature and are only for the purpose of illustrating a possible layout and may not form part of the standard specifications/amenities/services to be provided in the Project, Apartment/ Unit. Intending buyers are advised to use their discretion in relying on the information/amenities described/ shown therein. All specifications of the Project, Apartment/ Unit shall be as per the documents/information uploaded by the company on the website of UPREPA and the agreement between the parties. 1 sq. mtr. is equal to 10.764 sq. ft.

LiveWell at Estate 128

At Max Estates, your well-being is at the core of our ideology.

We call this the LiveWell & WorkWell philosophy — a vision to positively enhance every life we touch. Estate 128 has been designed with meticulous attention paid to every element, to create a unique confluence of spaces that enable holistic well-being across physical, social, emotional and environmental aspects of wellness.



Environmental Well-being

Designed with eco-conscious practices at every step, from sourcing to execution, for your long-term well-being.

Social Well-being

Designed for engagement and interaction, with amenities like all day dining and open cabanas, to bring you a sense of belonging within a community.

Physical Well-being

Designed to promote movement, with minimal surface vehicular circulation and an abundance of sports amenities, to enrich your quality of life.

Emotional Well-being

Encompassing 7 acres of open greens, to allow you to rejuvenate in nature, and find solace even amid the bustling cityscape.





Max Estates Ltd. (CIN No. U70200PB2016PLC040200) is having its Corporate office at Max Towers, L-15, C-001/A/1, Sector-16B, Noida, Gautam Buddha Nagar, Noida UP 201301 & Registered office at 419, Bhai Mohan Singh Nagar Village Ballmagra, Tehsil Balachaur, Nawanshehar, Punjab 144533. **Max Estates Ltd. is the promoter of Max Estates 128 Pvt. Ltd.** (CIN No. U55101DL2006PTC151422) Regd. Office: Max House, 1, Dr. Jha Marg, Okhla, New Delhi 110020. This document contains proprietary and confidential information that is not in the public domain. This document and its contents are intended for the exclusive use of Max Estates 128 Pvt. Ltd., its associate companies and any intended recipients with whom same is shared. This document information may not be published, circulated, reproduced or otherwise distributed to any third party without the express written consent of Max Estates 128 Pvt. Ltd. The Project 'Estate 128' is registered with the **UPPERA with registration no. UPRERAPR1446459**. Please refer to project details on the website of **UPPERA www.up-rera.in** prior to making any decision. The promoter of Estate 128 is Max Estates 128 Pvt. Ltd. (CIN No. U55101DL2006PTC151422) having its Corporate office at Max Towers, L-15, C-001/A/1, Sector-16B, Noida, Gautam Buddha Nagar, Noida UP 201301 & Registered office at Max House, 1, Dr. Jha Marg, Okhla, New Delhi 110020.
Promoter Registration No. - UPRERAPRM235248
Collection A/c of the Project: "Max Estates 128 Private Limited Collection A/c for Estate 128", ICICI Bank Ltd. having IFSC Code ICIC0000003, Account No. 003105042349

Disclaimer: This is not an offer, an invitation to offer and/or commitment of any nature. The images include artistic impressions and stock images. The details of Project, Apartment/Unit including but not limited to designs, dimensions, cost, facilities, plans, images, specifications furniture, accessories, paintings, items, electronic goods, additional fittings/fixtures, decorative items, false ceiling including finishing materials, specifications, shades, sizes and colour of the tiles and other details shown in the images are only indicative in nature and are only for the purpose of illustrating/indicating a possible layout and may not form part of the standard specifications/amenities/services to be provided in the Project, Apartment/Unit. Intending buyers are advised to use their discretion in relying on the information/amenities described/shown therein. All specifications of the Project, Apartment/Unit shall be as per the documents/information uploaded by the company on the website of UPPERA and the agreement between the parties.
1 sq. mtr. is equal to 10.764 sq. ft.